

Pro-Shore®, LLC
www.pro-shore.com

Email:
ron@pro-shore.net

Direct Sales:
ron@pro-shore.net
rob@pro-shore.net

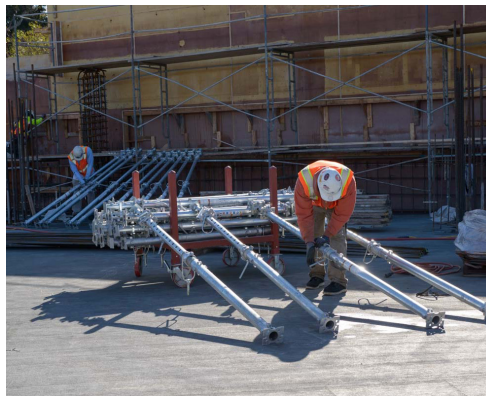
Pro-Shore's® versatile and efficient product lines are designed around contractors' needs. The Pro-Shore® decking system is the most cost effective solution in today's marketplace.

During the development of our system, Pro-Shore® combined forces with several leading contractors to gauge their forming needs, while summarily improving labor productivity. Information gathered during this process was vital in designing a simple system that can handle all phases of the contractors forming needs, in a cost effective manner.

Over 1,000 buildings have been completed with our system in eight countries.

Pro-Shore® ships out all equipment in convenient storage racks and/or wire baskets, which can be moved throughout the jobsite without the use of a crane, or by way of our Load Rated easy to insert/remove Casters with Quick Release Snap Pins. These Standard Load Rated Carts, Baskets and Caster combination allow for Pro-Shore Material to be moved conveniently and SAFELY around the jobsite by one man.

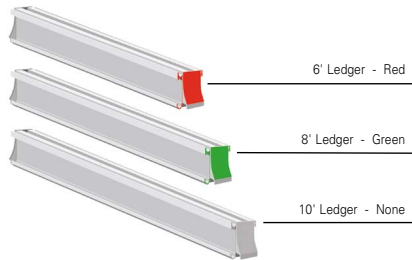
DESCRIPTION	QUANTITY PER RACK	WEIGHT	WEIGHT PER RACK
Primary Post	50	73 lbs.	3733 lbs.
Primary Post w/ Extension	50	88 lbs.	4483 lbs.
#3 Post	50	58 lbs.	2983 lbs.
#5 Post	40	88 lbs.	3174 lbs.
10' Ledgers	33	61 lbs.	2113 lbs.
8' Ledgers	33	47 lbs.	1651 lbs.
6' Ledgers	33	36 lbs.	1288 lbs.
4' LVL Joist	68	15.2 lbs.	1069 lbs.
5' LVL Joist	68	19.2 lbs.	1137 lbs.
6' LVL Joist	68	24.2 lbs.	1341 lbs.
6' Aluminum Joist	50	18 lbs.	983 lbs.
4' Aluminum Secondary Joist	50	13 lbs.	750 lbs.
5' Aluminum Secondary Joist	50	16 lbs.	900 lbs.
6' Aluminum Secondary Joist	50	19 lbs.	1050 lbs.
8' Aluminum Secondary Joist	50	25 lbs.	1350 lbs.



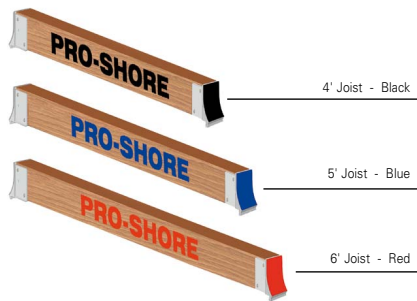
Pro-Shore® OVERVIEW

PRO-SHORE (Standard)

LEDGER / MAIN COLOR CODES

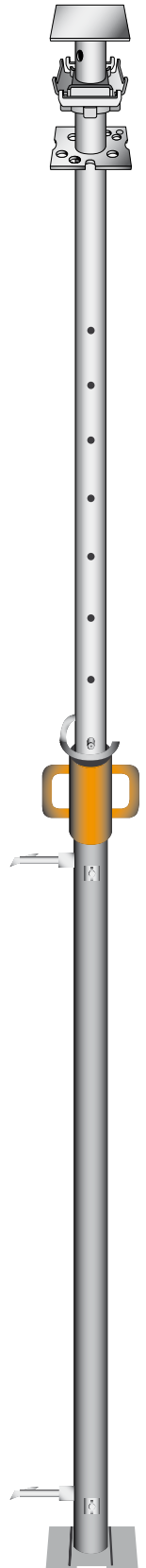


LVL JOIST / SECONDARY COLOR CODES



PRO-SHORE POSTS

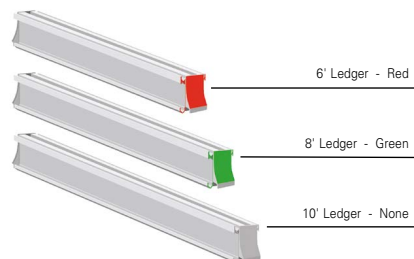
Posts available in heights ranging
from 6'-3" up to 20'-6" with
Load Capacities from 4,330lbs
up to 16,530lbs



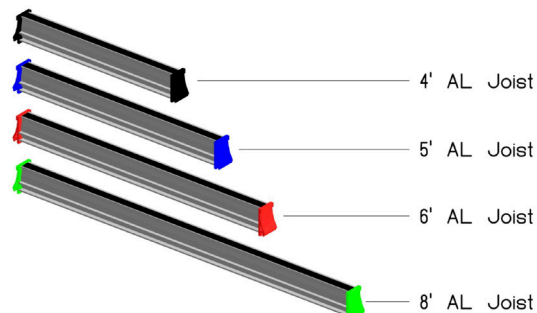
PRO-SHORE MAX

**20% lighter Secondary Beams / 30% Stronger
= 25% Reduction in parts needed per Grid**

LEDGER / MAIN COLOR CODES



ALUMINUM JOIST / SECONDARY COLOR CODES



Pro-Shore® IN ACTION

1



Staged components distributed from rolling carts in advance of erection.

2



Ledgers are hung from the drophead on one end, then attached to the second post and raised into position by a single worker.

3



Joists are hung by one end from a ledger and then rotated into position at the opposite end by a single worker.

4



System is laser-graded using screw collars on the posts for fine adjustments, intermediate joists are added, and plywood panels are tacked in place with four 8-penny nails each.

5



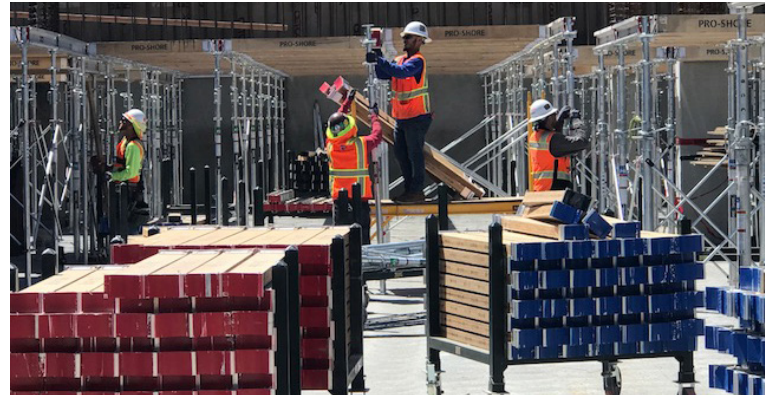
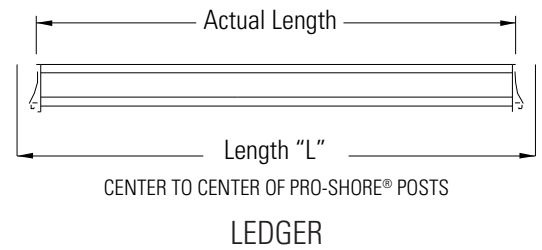
Dropheads shown released. Joists, ledgers, and plywood are freed so that 75% of the system can cycle to the next pour.

6



Posts reset in place serving as reshores after joists, ledgers, and plywood are stripped.

- 6'-3" to 20'-6" single post height capacity.
- Drophead system allow ledgers / mains and LVL / secondary joists to be stripped while leaving reshore posts in place.
- 70% material recovery one day after pouring. It's possible only vertical posts stay in place as reshores.
- Ramps and decks with slopes up to 15% can be shored and safely braced to resist lateral loads.
- 6'-0" to 8'-0" post grid (48 SF) requires 25% fewer posts than European 2mx2m (approx. 36 SF) post grids.
- Up to 42" slabs can be supported with standard equipment.
- Fully braced cantilevers allow 4'-0" walkways beyond slab edge.
- All parts are color coded to match erection drawings.



- 5,000 to 6,000 SF of equipment can be loaded on a 40' flatbed (results in lower freight costs).
- All posts have jet-locks so steel cross braces can be utilized to stabilize the posts into 4-legged towers for safety during erection of our system.
- No tripods or wood bracing required.
- "Field friendly" detailed delivery list with line item inventory.
- Pro-Shore® is available directly through us, or through one of our many distributors





A



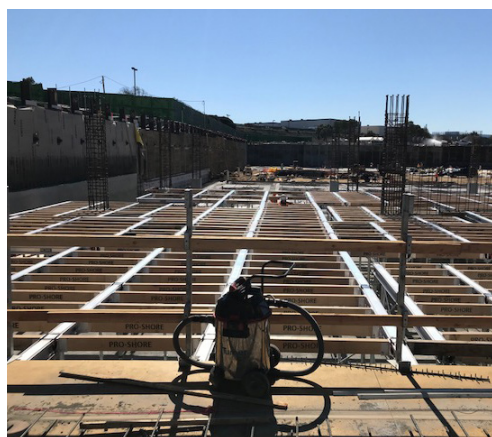
B



C



D



E



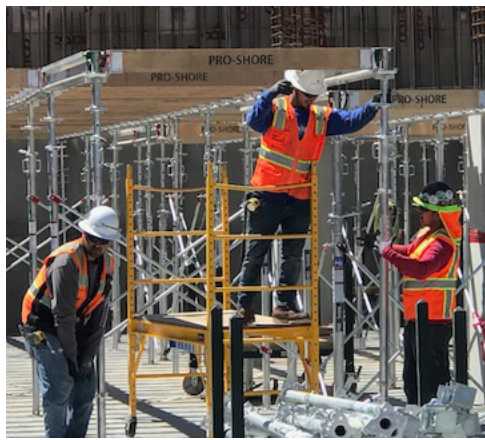
G



F



H



I



J



K



L



M



N



NORTH AMERICA DISTRIBUTORS



FORMWORK SERVICES & SUPPLY
Midwest / Southeast
formworkservices.com



AFS—ADVANCED FORMWORK SOLUTIONS
Washington, Oregon and Idaho
advancedformingsolutions.com



CSI SHORING, INC.
Southern California and Las Vegas
csishoring.com



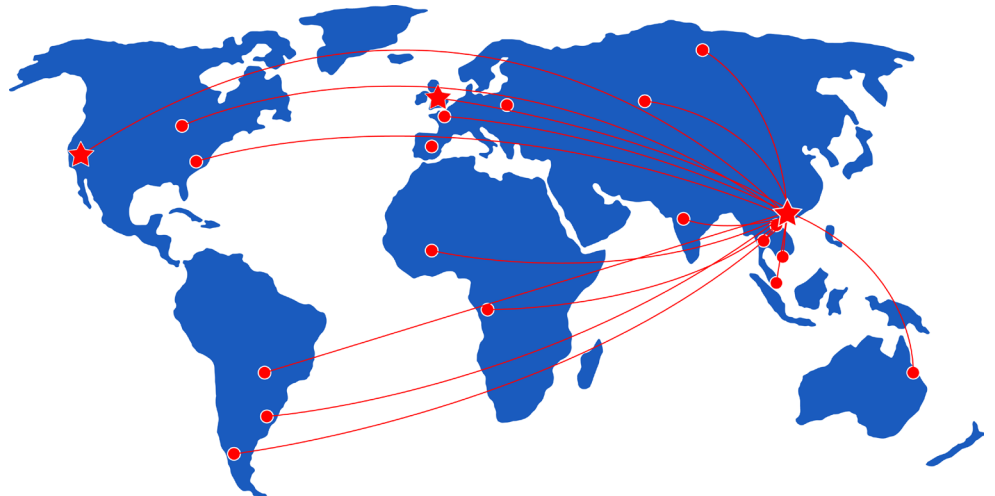
FOR-SHOR
Utah
forshor.com



ATLAS SALES
Hawaii & Guam
atlas-sales.com



ALUMA SYSTEMS
Global
aluma.com/us/



Corporate Office / Warehouse:

1636 Pacific Street
Union City, CA 94587
+1.209.636.2770

Shipping / Receiving:

Monday-Friday
7am to 4pm
Contact Rob Barry at rob@pro-shore.net